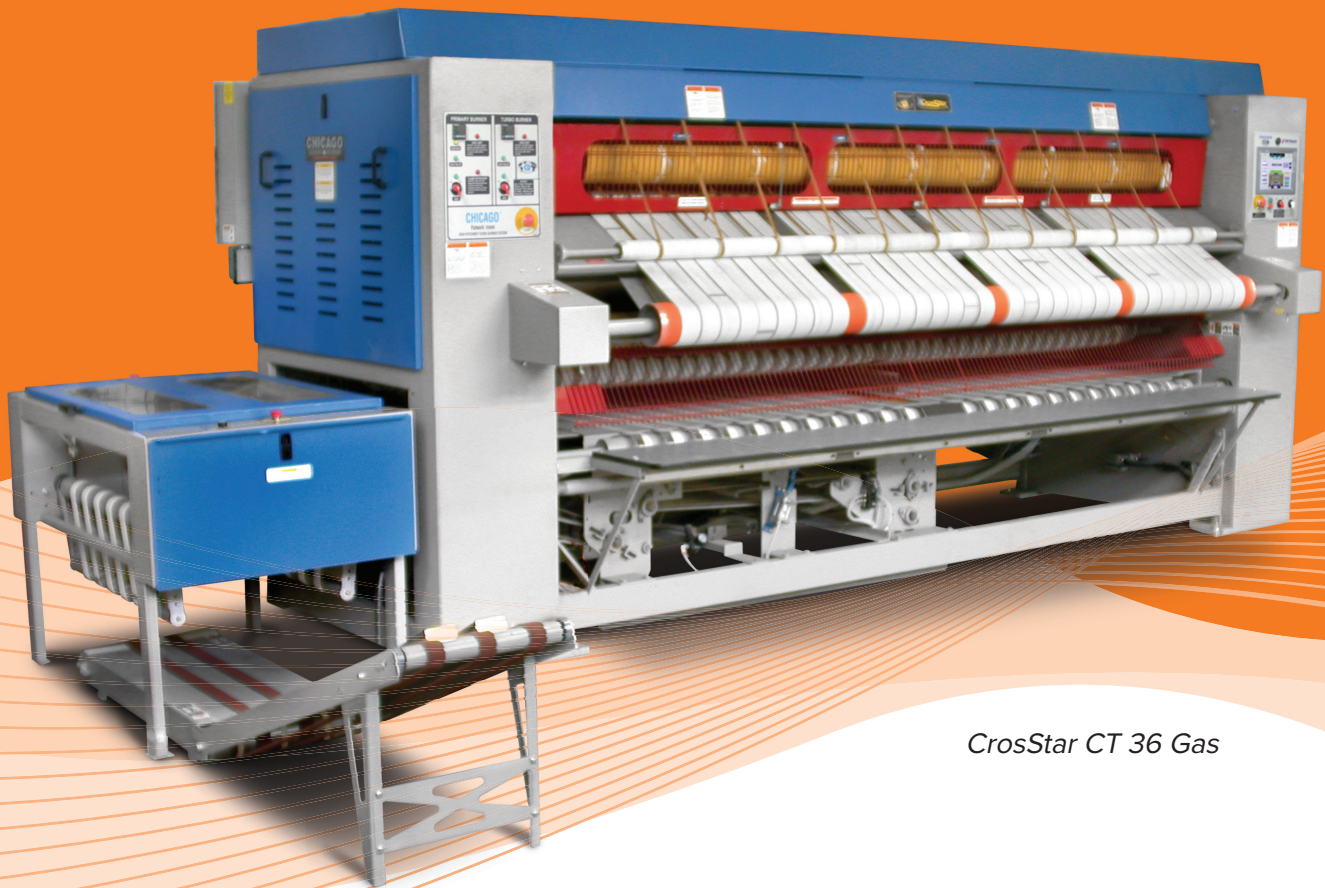




TRI-STAR CT 24/28/32™ CROSSTAR CT 36™

All-In-One Ironing/Folding/Crossfolding Series
with Optional Feeding/Stacking



CrosStar CT 36 Gas

On-premise laundries can enjoy the productivity and quality of high production drying and ironing in less than half the floor space required for individual machines. The Tri-Star 24" (600mm), 28" (700mm) and 32" (800mm) and the CrosStar 36" (900mm) all come in gas or steam heated models and are designed for those laundries without sufficient room for a separate ironer and folder. Each model can change from single lane mode to optional multiple lane operation—accommodating everything from today's oversized luxury items to smaller linen such as pillowcases or napkins. Combined with the built-in CHI•Touch (CT) controlled automatic folding, crossfolding and stacking system, these units are the all-in-one answer to your complete finishing needs—all in less space.



TRI-STAR 24/28/32 SERIES—FOR HIGHER VOLUME ON-PREMISE LAUNDRIES WITH LIMITED SPACE

Tri-Star series 24/28/32 finishing systems with CHI•Touch PC-based touch screen controlled primary folder, crossfolder and stacker provides complete finishing of up to 800 lbs. (360 kg) per hour in less than half the floor space of a separate ironer and folder.



CROSSTAR 36 — OUR LARGEST ALL-IN-ONE MACHINE OFFERS MORE POWER AND INCREASED PRODUCTION

When you need extra drying power for your luxury linens or heavier textiles, it's time to move up to the CrosStar 36—the industry's fastest and most advanced one-piece finishing system. It merges all the great features of a Tri-Star machine with Chicago's powerful Imperial 36 ironer, utilizing a longer input conveyor for feeding heavier pieces with less effort. Perfect for the quality boutique hotel or any business with a wide variety of high quality finishing needs and limited floor space.

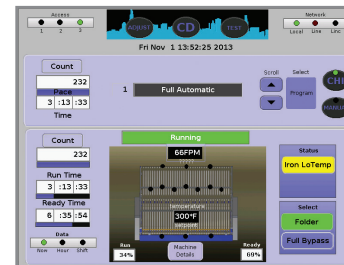


Tri-Star CT 28 Gas

STATE-OF-THE-ART SYSTEMS FOR YOUR QUALITY FINISHED LINENS

Standard Features

- Choice of Tri-Star 24", 28" or 32" (600, 700, or 800 mm), or CrosStar 36" (900 mm) ironing cylinders to match exact production needs
- Mirror-finish ground and polished ironing cylinder with 120" (3050 mm) usable ironing width for even and efficient heat transfer (wider widths available, consult factory for details)
- Ironed and crossfolded items are delivered to left side receiving shelf or optional stacker/conveyor for added labor savings
- Primary folded or bypassed (ironed only) items are returned to front table for removal
- Built-in full size Skyline 40" wide crossfold section better accommodates larger sheets
- Touch control AC frequency inverter variable speed drive with soft start and jog features; no mechanical clutch/brake devices
- Heat-Lock system including exhaust canopy with insulated rear heat shield, two blowers and motors to remove excess moisture, raise ironing temperature, reduce energy consumption and improve laundry room comfort
- User-friendly controls with speed and temperature indicators to monitor ironing conditions and alert operators of situations requiring attention
- Compression rolls are pneumatically controlled for uniformed ironing and simplified operation
- Self-guiding tapes are used in feed area only. No tapes required in ironing area
- Environmentally-safe Nomex[®] high temperature ironing textiles for long service life and easy replacement
- Auto-tension return ribbons hold linen in firm contact with heated surface during ironing
- Jog forward/reverse conveyors for easier maintenance



- CHI-Touch PC based full color touch screen control system for operation, management and diagnostics
- Complete protection by safety covers, guards, stop buttons and bilingual safety labels
- Safety finger bar protects full width of ironer
- U.S. designed and manufactured to assure quality control and prompt parts availability

Gas Heated Model

- Higher BTUs provide an economical way to dry and iron, and lower operating costs, by delivering greater production in less time
- High efficiency forced air power burner produces the maximum drying power available for faster evaporation of moisture from wet linen
- Eagle Eye[™] electronic touchless ironing temperature sensor assures pinpoint temperature control
- Surefire two-stage electronic ignition and proving eliminates flame rod and isolates all ignition components in a stable and accessible area for reliability and serviceability
- Electronically cycles burner on and off to maintain correct temperature with economical operation



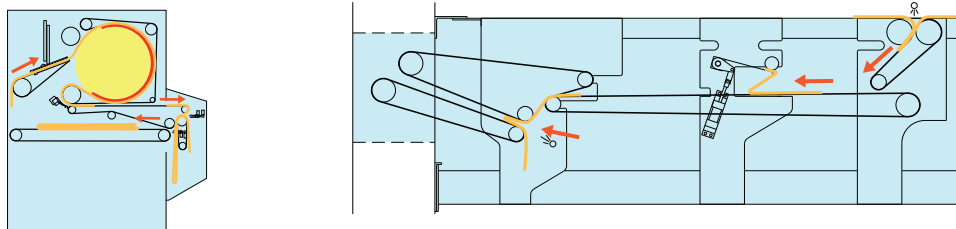
- Combustion blower assures correct air/gas mixture and proper air circulation for optimum heating performance and efficient gas usage
- Dual-zone, sectionalized Turbo-Burner heats outer sections of ironing surface as needed to ensure even roll temperature and significantly reduces gas consumption (32 and 36 models only)

Steam Heated Models

- A traditional method of heating with exceptionally low maintenance requirements
- Steam ironing cylinders are constructed, tested and certified with the ASME stamp to meet local code and insurance requirements
- Temperature display and steam pressure gauge monitor heating system performance
- Dependable rotary steam union admits steam and discharges condensate
- Ideal for installations with existing boiler providing 100 to 150 PSI at the ironer
- Furnished with flexible hoses in the inlet and return lines, all internal piping, steam separator, and steam trap for simple and economical installation

Path of Linen

After washed linen is placed on the Tri-Star or CrosStar's input conveyor, it is dried and ironed by the ironing section's large heated cylinder. Linen then moves to the primary and crossfolding sections. Chicago's unique CHI-Touch control then automatically selects the correct number of folds according to its custom programming, eliminating the possibility of manual selection errors. A series of precise air-blasts fold the linen to deliver neatly finished and folded packages with hidden selvage edges. When a crossfold isn't necessary, the primary-only function delivers the folded items to the front delivery shelf.



Harco
Chef de file en équipements de buanderie

6565 Rue Abrams, Ville St. Laurent, QC H4S 1X9
Phone: 1-888-427-2626 • Fax: 1-514-331-0800
email: info@harcoinc.ca • www.harcoinc.com

OPTIONS FOR IMPROVED EFFICIENCY AND FLEXIBILITY

Multiple Lane Primary Folding

The Tri-Star Series also offers four lane primary folding for smaller items such as pillowcases, making it more adaptable for both small and large piece processing. CrosStar 36 offers 1-2-4 lane primary folding. In addition to single lane large piece operations, smaller items such as pillowcases or medium size table linen can also be primary folded, making the system more versatile.

Wider Ironing Width

136" (3450mm) ironing width is available to accommodate boutique hotels and on-premise laundry facilities processing a variety of large size linens, including extra large California king sheets and popular 132" banquet rounds without the need to fold in half—no unsightly creases!

Heavy Duty First Crossfold Blade

First crossfold performed by heavy duty blade for dependability and consistency on thick or thin items (standard on CrosStar 36).

Vacuum Feed Table

Improves fed linen quality and allows operators to release fed items more quickly.

Stacker and Conveyor

The automatic large piece stacker, located at machine exit, conveniently accumulates neat, organized stacks on the conveyor, which then delivers the linen back to the operator for easy removal. The CHI•Touch controls both stacker and conveyor from the front of the machine, making for easy operation. The stacker and conveyor adds extra versatility and labor savings to any Chicago system.

O.P.L. (One Person Loading) System

A compact, fast and ergonomically correct built-in spreader feeder, based on the original cornerless Edge spreader feeder series. Designed to keep up with the speed and power of the Tri-Star Series and CrosStar, O.P.L. enables one person to operate a complete finishing system. The above-ironer design raises the unit, allowing small pieces to be fed directly into the ironer without interfering with return-to-operator capabilities. O.P.L. can also be operated by two people for increased production on ironers at higher speeds.



O.P.L. Ultra Compact Feeder - as shown on a Tri-Star 24

A Complete Range of Separating, Feeding, Ironing, Folding and Sorting Options

Because Chicago specializes only in flatwork finishing equipment, it can offer the world's widest range of high production separating, feeding, ironing, folding, and sorting equipment. Complete flatwork finishing systems range from automated multi-roll systems producing over 2,000 pounds per hour, to compact ironers for small on-premise laundries.

Chicago's performance record is unmatched in thousands of installations in commercial, hospitality, health care, textile rental, institutional, and on-premise laundries all over the world. An experienced Chicago professional will be pleased to make an objective equipment recommendation based on your production, space, utility, and budget requirements.

Contact your local Chicago distributor or the factory sales assistance office for a no-obligation analysis of your needs.

Chicago's customer service department offers full technical and service support by telephone, email and on our website. We also offer overnight service for quick parts availability.

Visit our website, www.chidry.com, to learn more about our complete line of flatwork finishing systems. Newly redesigned, and now mobile-friendly, easily access current product brochures, detailed floor plans and specifications, as well as brief demonstration videos of select Chicago® equipment in action.



CHICAGO DRYER COMPANY

2200 North Pulaski Road
Chicago, Illinois 60639-3737 USA

Phone • 773.235.4430
Fax • 773.235.4439

Web • www.chidry.com
Email • chicago@chidry.com

Bulletin #7581