

THE BENCHMARK MACHINES

OPL | ON-PREMISE LAUNDRY



Gas Heating



Electric Heating



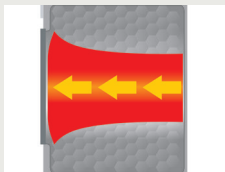
7⁺ Years
Warranty



PDR 910 | 20 lbs. PERFORMANCE-PLUS

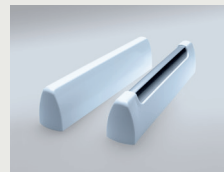
Features

- M Touch Pro programmable color display
- Short program cycles
- Patented Honeycomb Drum
- PerfectDry system – residual moisture sensors
- Intelligent dryers – gentle and uniform
- Perfect anti-crease
- Economical and efficient
- WiFi capable



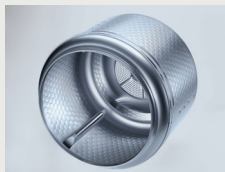
Axial airflow

For perfect drying results, air is passed through the drum according to the principle of longitudinal air flow.



SoftLift drum ribs ensure gentle fabric care

The SoftLift drum ribs allow laundry to be dried gently and evenly.



Honeycomb Drum

Less folding, easy finishing: laundry is dried very gently and evenly in the Honeycomb Drum.



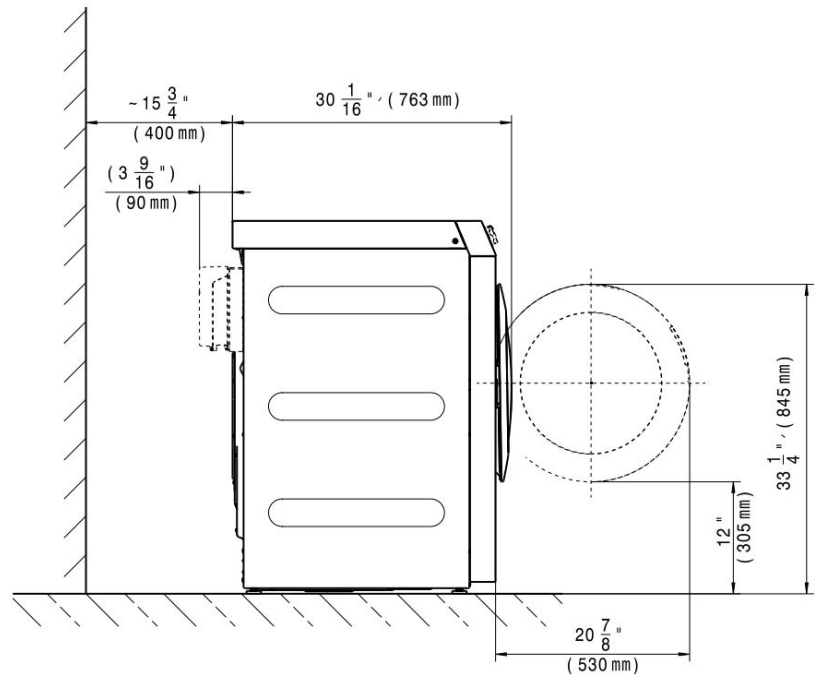
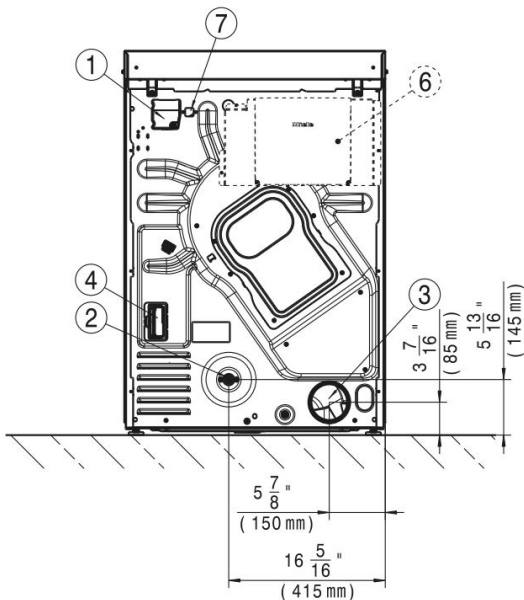
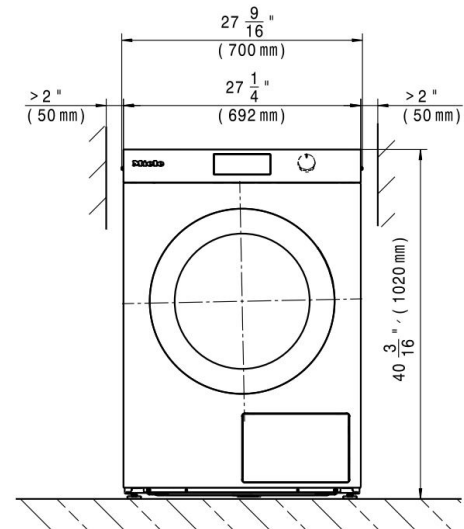
Practical large-surface filter

The filter is easy to remove and captures the fluff from several drying cycles.

Model	Heat Type	Electrical Specification Voltage/Hz/Phase (Amp)	Color	Material No.	Article No.
PDR 910	Gas	208, 240/60/1 (2 x 15 A)	Iron Grey	12271750	52910018NAM
PDR 910	Electric	208, 240/60/1 (2 x 30 A)	Iron Grey	12271740	52910017NAM

Specifications

Capacity	20 lbs. (9 kg)
Cylinder Diameter	25 ⁹ / ₁₆ in. (649 mm)
Cylinder Depth	21 ⁵ / ₈ in. (550 mm)
Cylinder Volume	6.4 cu.ft. (180 l)
Machine Dimensions (WxDxH)	27 ⁹ / ₁₆ x 30 ¹ / ₁₆ x 40 ³ / ₁₆ in. (700 x 763 x 1,020 mm)
Door Opening	17 ⁵ / ₁₆ in. (440 mm)
Floor to Door	12 in. (305 mm)
Reversible Door	No
Shipping Dimensions (WxDxH)	29 ¹⁵ / ₁₆ x 32 ¹ / ₄ x 47 ¹³ / ₁₆ in. (760 x 820 x 1,215 mm)
Net Weight	159 lbs. (72 kg)
Crated Weight	176 lbs. (80 kg)
Min. Recommended Distance Between Machines	2 in. (50 mm)
Plug/connection cable	NEMA plug: Twist Lock L6-30
Agency Approvals	Intertek



Heating	Voltage (Voltage/Hz/Phase)	Wire	Circuit Breaker Amps	Running Amps	Total Power (kW)
Gas	208, 240/60/1	2 Wire + Ground	15	1.5	0.32
Electric	208, 240/60/1	2 Wire + Ground	30	21.9	4.0 (208V) 5.2 (240V)

Specifications subject to change without notice or obligation.
Contact Miele USA at (800) 991-9380 or Miele Canada at
(888) 325-3957 for dimensions not shown or for clarification.

Harco
Leaders in Laundry Systems

5610 McAdam Road, Mississauga, Ontario L4Z 1P1
905.890.1220 • 800.387.9503 • Fax: 905.890.7039
email: harco@harco.com • www.harco.com