

THE BENCHMARK MACHINES

OPL | ON-PREMISE LAUNDRY



Electric Heating



7 Years
Warranty

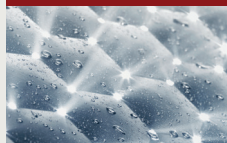


PWM 909 | 20 lbs. PERFORMANCE PLUS

FEATURES

- M Touch Pro Plus freely programmable color display
- Short program cycles
- Patented Honeycomb Drum
- 3D imbalance monitoring
- G-force of 518
- High durability: tested for 30,000 operating hours
- Safe disinfection
- Low consumption values

Exclusive to Miele



Patented Honeycomb Drum

The Honeycomb drum creates a thin film of water between the drum wall and the laundry. Textiles are treated more gently. Garments keep their shape and last longer.



Short Program Cycles

Premium commercial technology allows you to benefit from quick and efficient program cycles.



EcoSpeed Patented Wash Process

The EcoSpeed washing process features an optimized drum rhythm and enhanced washing action, allowing intensive cleaning performance with reduced water usage.



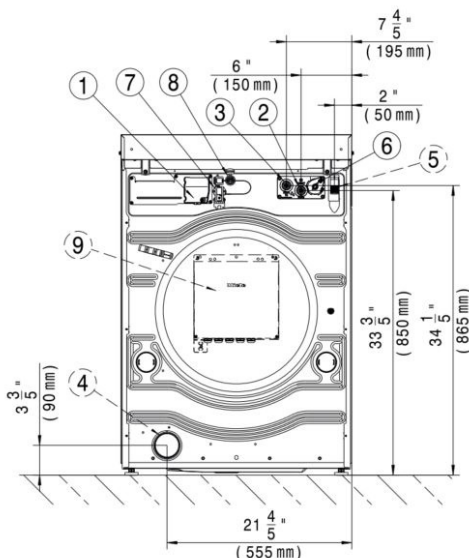
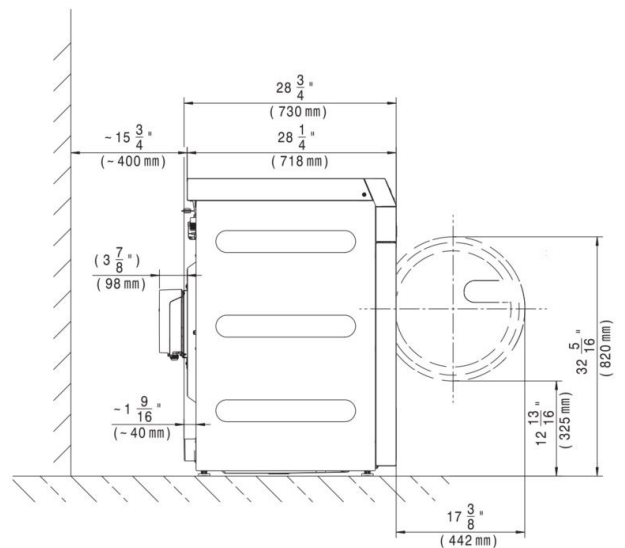
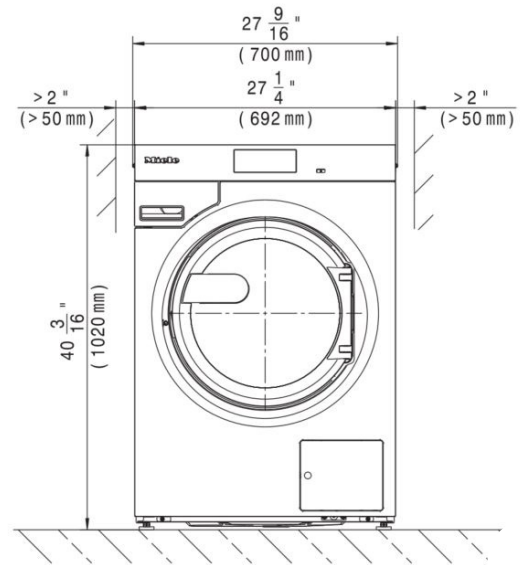
Proven Hygiene

Our washing machines in the Benchmark series remove more than 99.9% of all viruses (including coronaviruses).

Model	Heat Type	Electrical Specification Voltage/Hz/Phase (Amp)	Color	Material No.	Article No.
PWM 909, Drain Pump	Electric	208,240/60/1 (2 x 30 A)	Iron Grey	12271880	51909034NAM
PWM 909, Drain Valve	Electric	208,240/60/1 (2 x 30 A)	Iron Grey	12271900	51909035NAM

Specifications

Capacity	20 lbs. (9 kg)
Cylinder Diameter	21 ⁹ / ₁₆ in. (548 mm)
Cylinder Depth	12 ¹ / ₄ in. (312 mm)
Cylinder Volume	2.8 cu.ft. (80 l)
Machine Dimensions (WxDxH)	27 ⁹ / ₁₆ x 28 ³ / ₄ x 40 ³ / ₁₆ in. (700 x 730 x 1,020 mm)
Door Opening	14 ⁹ / ₁₆ in. (370 mm)
Floor to Door	12 ¹³ / ₁₆ in. (326 mm)
Reversible Door	No
Shipping Dimensions (WxDxH)	29 ¹ / ₂ x 32 ³ / ₁₆ x 47 ¹³ / ₁₆ in. (750 x 817 x 1,214 mm)
Net Weight	340 lbs. (155 kg)
Crated Weight	357-368 lbs. (162-167 kg)
Wash Speed	46 rpm
Extract Speed	1,300 rpm
G-force	518
Water Inlets	2 x ³ / ₄ in. (203 x 19 mm)
Drain Diameter Drain Pump	7/8 in. (22 mm)
Drain Diameter Drain Valve	2 ³ / ₄ in. (70 mm)
Recommended Water Pressure	14.5 -145 psi
Water Flow Drain Pump	6.9 gal/min. (261 l/min.)
Water Flow Drain Valve	52.8 gal/min. (200 l/min.)
Min. Recommended Distance Between Machines	2 in. (50 mm)
Plug/connection cable	NEMA plug: Twist Lock L6-30
Agency Approvals	Intertek



Heating	Voltage (Voltage/Hz/Phase)	Wire	Circuit Breaker Amps	Running Amps	Total Power (kW)
Electric	208, 240/60/1	2 Wire + Ground	30	22.4	5.2

Specifications subject to change without notice or obligation.
Contact Miele USA at (800) 991-9380 or Miele Canada at (888) 325-3957 for dimensions not shown or for clarification.